



# FETCO Hot Water Dispenser (HWD) Descaling Instructions

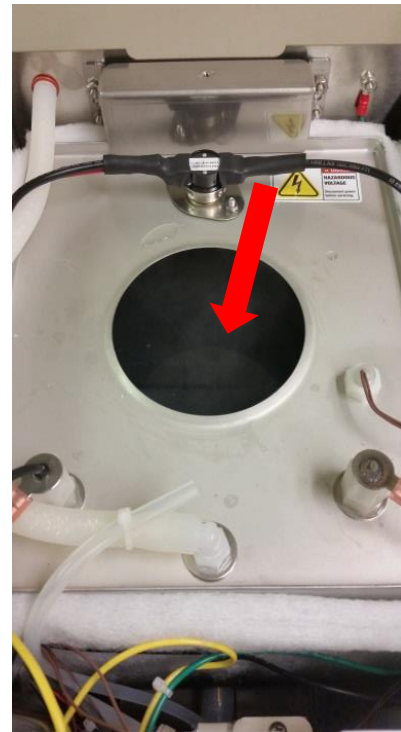
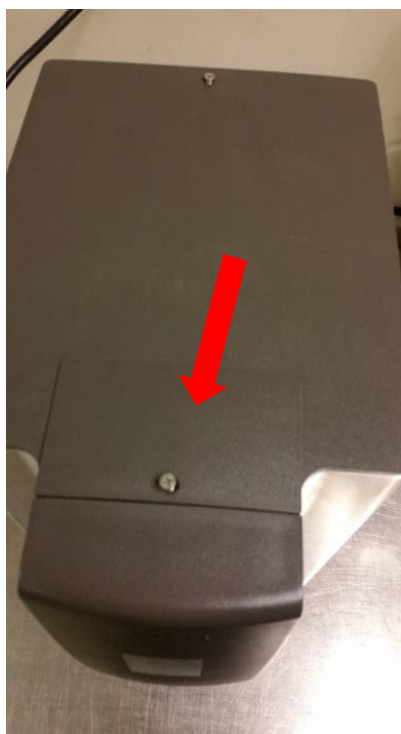


***This descaling procedure must be carried out by a qualified service technician. This procedure requires removing access panels, exposing electrical circuits, and working with chemicals and hot water.***

## **Follow these steps to descale the dispenser boiler:**

- 1: Machine should be up to temperature (if able to produce hot water) before beginning procedure.
- 2: **Unplug the machine** and turn off the water supply.
- 3: Remove the plastic top panel by unscrewing the two phillips screws on the top of the machine, and then loosen the hex nut to remove the round stainless tank access cover and gasket. Set aside.
- 4: Pour the descaling chemical (must be food safe) into the tank and let sit for at least 30 minutes. Fetco recommends ScaleKleen descaler by Everpure.

**IMPORTANT:  
Gloves and eye  
protection must be  
worn for  
protection to avoid  
contact with any  
cleaning  
chemicals.**

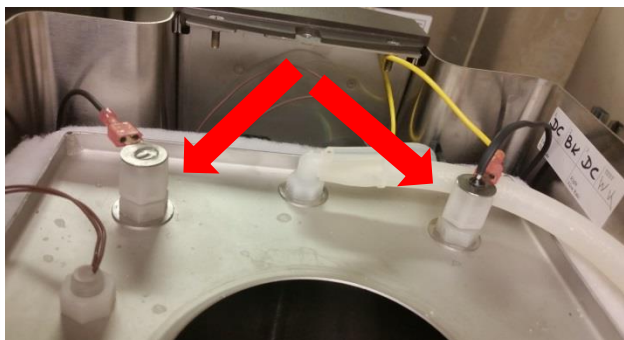




# FETCO Hot Water Dispenser (HWD) Descaling Instructions

# FETCO®

**CAUTION:** Hot water and chemicals are being used during this procedure



5: Loosen the white plastic nut and remove both the high level and the low level probes (short one on left & long on right) by pulling upwards and sliding out.



6: Loosen the white nut on the float switch and pull the switch from underneath through the round access hole without disconnecting from the control board.



7: From the back of the machine, twist and pull the tank drain tube out from the access hole on the machine. Slide the tube clamp off of the drain plug and drain the tank (only complete step after 30 minutes have passed with the cleaning solution).

8: Physically clean the tank if possible. If a large amount of scale is present, you may have to use a brush to knock off the scale or even remove the tank to fully service. If necessary, repeat the descaling process to rinse the tank.

9: Descale and clean (or replace if necessary) the probes and the float switch so there is no scale or sediment on them and then reinstall in the correct position.

10: Reinstall the round tank cover and gasket and then the plastic top cover.

11: Reconnect the power and turn on machine. Allow it to fill and heat up and then test for proper operation with the store manager.

12 : Make note of any potential issues or items in need of repair and submit service report.