

HIGH VOLUME COFFEE BREWING SYSTEMS

MOBILE CART Series

CBS-71AC (FOR MOBILE CARTS)

Single 6.0 Gallon Station



Shown with 6.0 Gallon Mobile LUXUS® Thermal Dispenser (LBD-6C) and Serving Station for LBD-6 with Drip Tray

FETCO® is the category expert and the ONLY manufacturer of ultra high-volume (7-24 Gallon) portable coffee brewing systems for very large scale operations. Due to the high capacity output and reliable performance the CBS-7000 Series is the preferred choice for specification in hotels, stadiums, convention centers and other large venues.



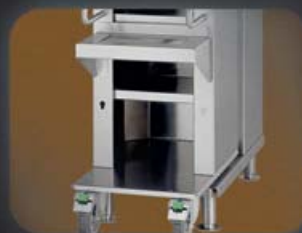
Set it and forget it.

Once your recipe parameters are programmed in, this brewer delivers consistent and repeatable results.



Steam Control.

Efficient, steam containing brew compartments virtually eliminate the need for external ventilation, making this system extremely adaptable to any Foodservice environment.



Expand Your Service.

Configured for mobile cart dispensing, this brewer can be outfitted with several thermal dispensers (sold separately) for quick deployment of multiple gallons of hot, fresh coffee throughout the venue.

FETCO®
TRUSTED | RELIABLE | QUALITY

Water Specification

Water Inlet
3/8" male flare fitting

Minimum Flow Rate
1 1/2 gpm [5.71 lpm]

Water Pressure
20-75 psig [138-517 kPa]

Electrical Configuration

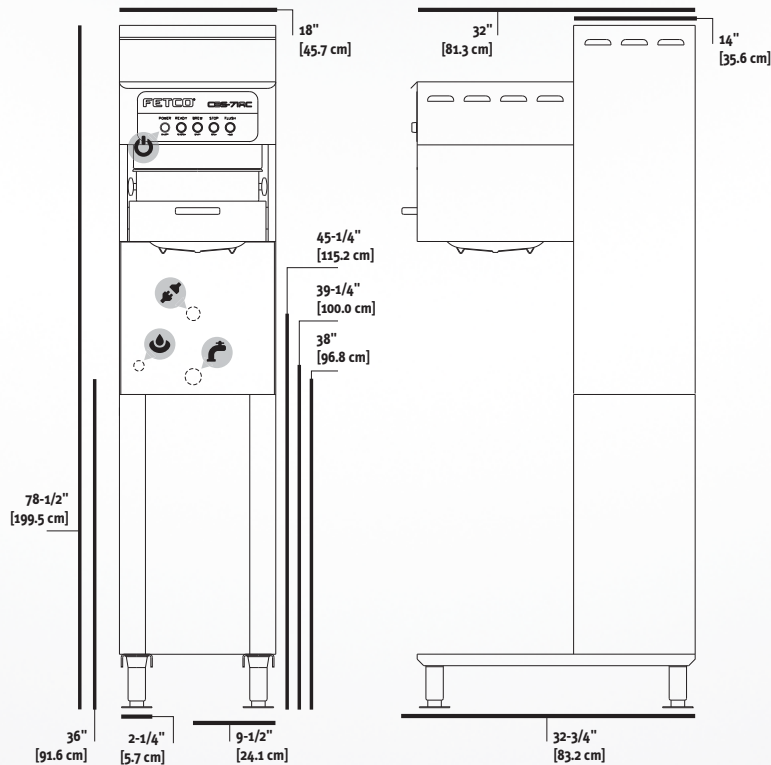
Configuration Code	Heater Configuration	Voltage	Phase	Wires	KW	Electrical Connection	Max Amp Draw	Gallon [Liter] /Hour
US & CANADA								
C71018	3 x 5.0 kW	120/208-240	3	4+G	11.5-15.1	Terminal Block	31.9-36.8	18.0-24.0 [68.1-90.8] ⁽¹⁾
C71028	3 x 10.0 kW	120/208-240	3	4+G	22.8-30.1	Terminal Block	63.2-72.9	36.0 [136.3] ⁽¹⁾
C71038	3 x 10.0 kW	440-480	3	3+G ⁽²⁾	20.8-30.0	Terminal Block	30.1-36.1	36.0 [136.3] ⁽¹⁾
INTERNATIONAL								
C71058	3 x 5.0 kW	220-240/380-415	3	4+G	12.9-15.1	Terminal Block	19.5-21.3	18.2 [69.0] ⁽¹⁾
C71068	3 x 10.0 kW	220-240/380-415	3	4+G	25.5-30.1	Terminal Block	38.6-42.1	24.3-30.4 [92.0-115.0] ⁽¹⁾

(1) Based on standard factory settings: 7.0 minute brew time; 0% prewet; 200°F water.

(2) Plus power cord for control, 120 VAC.

Measurements

Height	Width	Depth	Empty Weight	Filled Weight	Shipping Weight	Shipping Dimensions:
78 1/2" [199.5 cm]	18" [45.7 cm]	32 1/4" [83.2 cm]	175 lbs [79.4 kg]	390 lbs [177.0 kg]	175 lbs [79.4 kg]	55" x 48" x 42" [137.2 x 121.9 x 106.7cm]



- Electrical Connector
- Tank Drain
- Water Inlet
- On / Off Switch



Compatible Dispensers

6.0 Gallon Mobile LUXUS® Thermal Dispenser (LBD-6C)

D020

Customize Your Brewer

Gravity Jug Fill Hose for LBD-6C & LBD-18
Identifier Plates, Acrylic

A037

A069

Cups per Hour*

8oz. **480** 12oz. **320** 16oz. **240** 20oz. **192**

Paper Coffee Filters

23" x 9" (500/Case)

F006

* Approximate based on maximum power setting.

Information

fetco.com

847.719.3000
1.800.338.2699 USA
 847.719.3001

Food Equipment Technologies Co.
600 Rose Road
Lake Zurich, IL 60047
USA